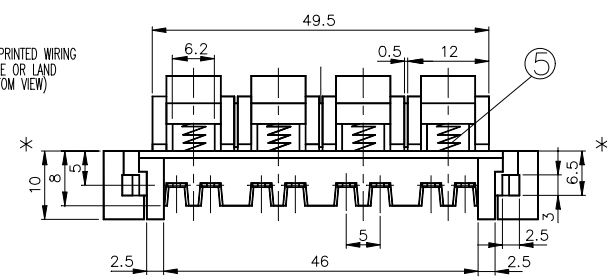
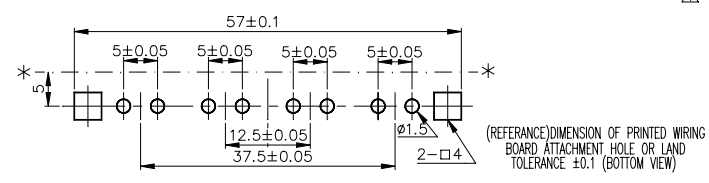
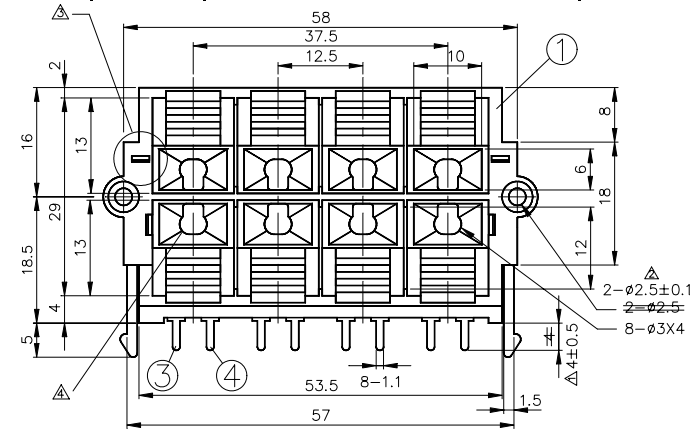
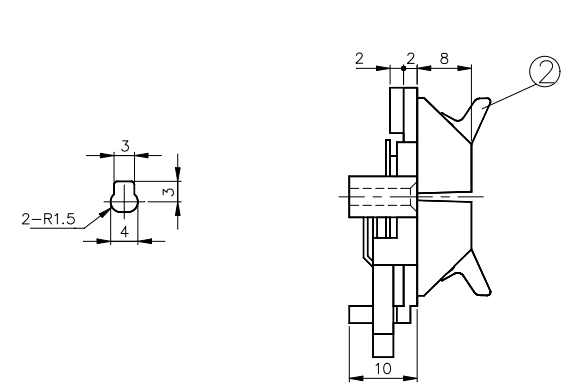


REVISIONS

LTR	DESCRIPTION	DATE	REVISED	APPROVED
· x1	修改尺寸符合日本規格	1999.03.01	ANDY	KUNG
· x1	修改尺寸符合日本規格	1999.04.16	ANDY	KUNG
· x1	補增加 HOLEx4	1999.12.09	C.SHUANG	KUNG
· x1	修正夾線孔形狀(圖面)	2000.08.09	CHRISTINA	JOHNSON



5	SPRING	8	0.5 SWC	
4	CONTACT SPRING	4	C2680, t=0.6	MB: Cu Pb/Sn PLATED
3	CONTACT SPRING	4	C2680, t=0.6	MB: Cu Pb/Sn PLATED
2	PUSH PLATE	8	ABS 94HB	
1	HOUSING	1	ABS 94HB (BLACK)	

LTR	PART NAME	QTY	MATERIAL	REMARK
DSND	ANDY HO	DATE	1999.02.10	NAME PUSH TERMINAL CAT. No. KM05006V- DWN. No. A-05006V
DWN	CHRISTINA	DATE	2000.08.09	
CHKD	JOHNSON	DATE	2000.08.09	
APVD		DATE		

3RD ANGLE PROJECTION
UNIT : mm

UNLESS OTHERWISE SPECIFIED, TOLERANCE ON DECIMAL:±0.3 ANGLES:±5°

SINGATRON U.S.A.

005