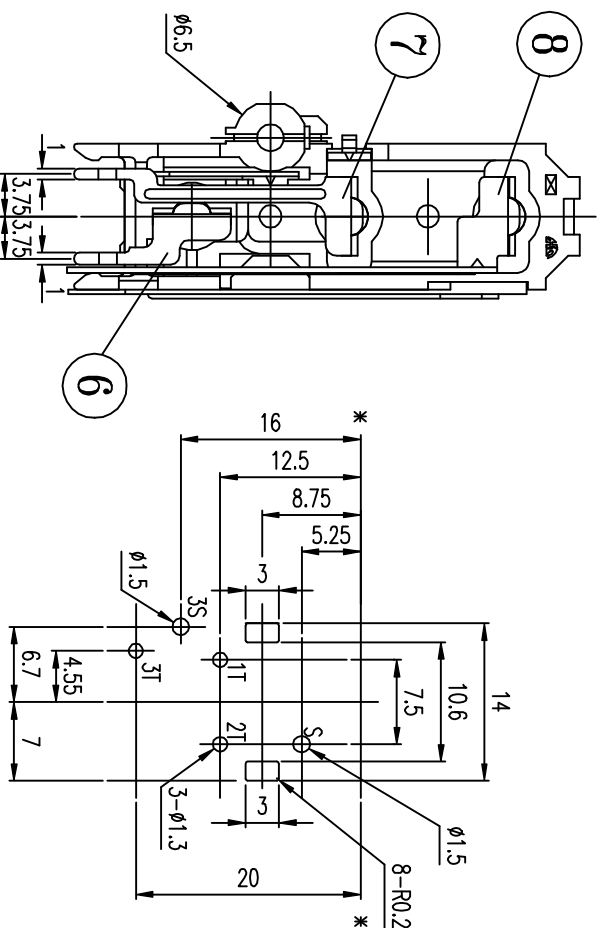
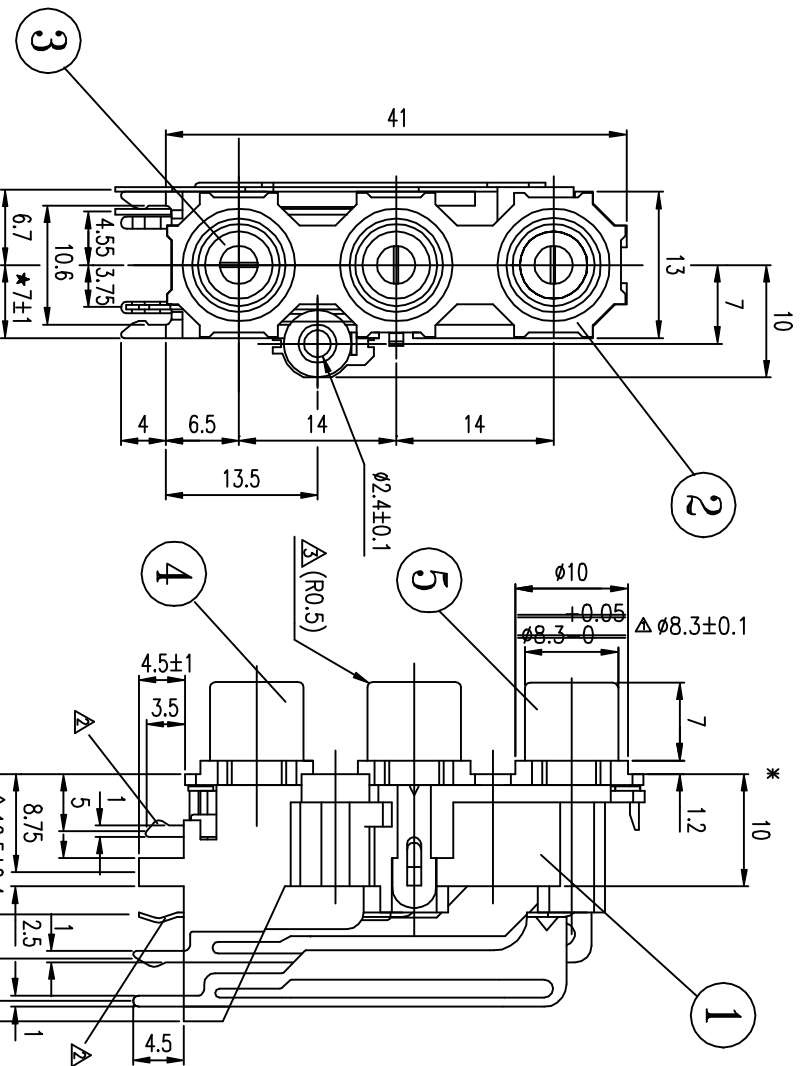
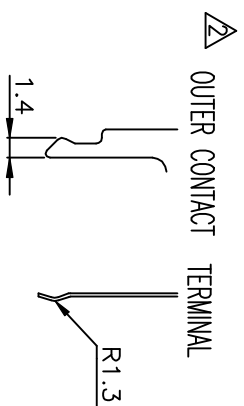
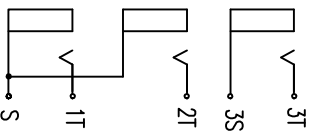
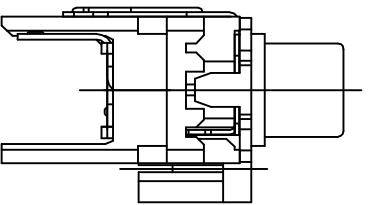


| REVISIONS | | | | |
|-----------|-------------|-----------------|----------|-----------|
| LTR | DESCRIPTION | DATE | REVISED | APPROVED |
| Δ x1 | | | H.P.Liu | C.H.Chang |
| Δ x2 | | | H.Y.Chou | Kung |
| Δ x2 | (R0.5), | 12.5±1—12.5±0.4 | H.Y.Chou | |



HOLE LAYOUT (TOLERANCE ±0.1)
(BOTTOM VIEW)



| | | | | | | |
|------|---------------|------|---------------|----------------------|-------|-----------|
| 8 | TERMINAL | 1 | C2680 , t=0.5 | MB : Cu | Sn/Pb | PLATED |
| 7 | TERMINAL | 1 | C2680 , t=0.4 | MB : Cu | Sn/Pb | PLATED |
| 6 | TERMINAL | 1 | C2680 , t=0.4 | MB : Cu | Sn/Pb | PLATED |
| 5 | OUTER CONTACT | 1 | C2680 , t=0.4 | MB : Cu | Ni | PLATED |
| 4 | OUTER CONTACT | 1 | C2680 , t=0.4 | MB : Cu | Ni | PLATED |
| 3 | WASHER | 2 | ABS , UL-94HB | | | |
| 2 | COVER | 1 | ABS , UL-94HB | | | BLACK |
| 1 | HOUSING | 1 | ABS , UL-94HB | | | |
| LTR | PART NAME | QTY | MATERIAL | | | REMARK |
| DSND | J.S.Tseng | DATE | 1994.10.29 | SCALE | 2/1 | NAME |
| DWN | H.Y.Chou | DATE | 1997.11.07 | 3RD ANGLE PROJECTION | | CAT. NO. |
| CHKD | | DATE | | UNIT: mm | | HSP-243V- |
| APVD | | DATE | | | | |

UNLESS OTHERWISE SPECIFIED, TOLERANCE ON DECIMAL: ±0.3 FRACTIONS:

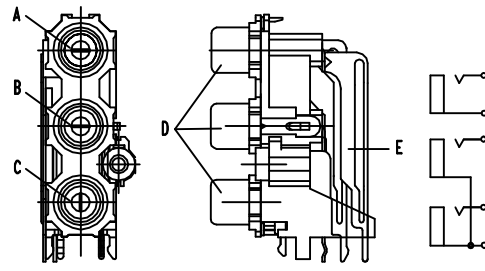
ANGLES: ±2°

SINGATRON ENTERPRISE CO., LTD. (U.S.A.)

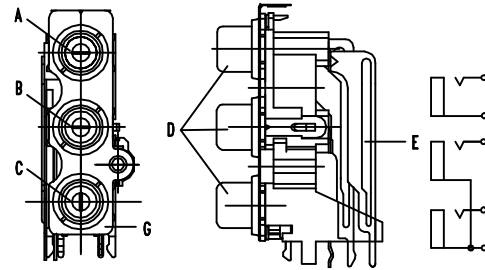
DWN.NO. A-243V

001

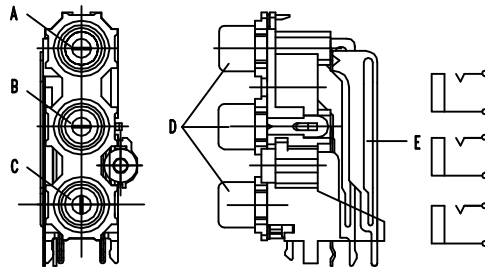
| MODEL NO. | COLOR | | | FINISH | | | |
|----------------|-------------|--------|--------|---------|-------|-------|-------|
| | A (HOUSING) | B | C | D | E | F | G |
| HSP-243 SREIES | | | | | | | |
| HSP-243 ___-01 | BLACK | RED | WHITE | NI | PB-SN | PB-SN | NI |
| HSP-243 ___-02 | BLACK | WHITE | RED | NI | PB-SN | PB-SN | NI |
| HSP-243 ___-03 | RED | RED | WHITE | NI | PB-SN | PB-SN | NI |
| HSP-243 ___-04 | WHITE | RED | WHITE | NI | PB-SN | PB-SN | NI |
| HSP-243 ___-05 | ORANGE | WHITE | RED | NI | PB-SN | PB-SN | NI |
| HSP-243 ___-06 | BLACK | BLACK | BLACK | NI | PB-SN | PB-SN | NI |
| HSP-243 ___-07 | YELLOW | WHITE | RED | NI | PB-SN | PB-SN | NI |
| HSP-243 ___-08 | RED | RED | RED | NI | PB-SN | PB-SN | NI |
| HSP-243 ___-09 | WHITE | WHITE | WHITE | NI | PB-SN | PB-SN | NI |
| HSP-243 ___-10 | YELLOW | RED | WHITE | NI | PB-SN | PB-SN | NI |
| HSP-243 ___-11 | RED | WHITE | RED | NI | PB-SN | PB-SN | NI |
| HSP-243 ___-12 | RED | WHITE | YELLOW | NI | PB-SN | PB-SN | NI |
| HSP-243 ___-13 | YELLOW | YELLOW | YELLOW | NI | PB-SN | PB-SN | NI |
| HSP-243 ___-14 | WHITE | RED | BLACK | NI | PB-SN | PB-SN | NI |
| HSP-243 ___-15 | WHITE | RED | YELLOW | NI | PB-SN | PB-SN | NI |
| HSP-243 ___-16 | BLACK | RED | WHITE | L-PB-SN | PB-SN | PB-SN | NI |
| HSP-243 ___-17 | YELLOW | WHITE | RED | L-PB-SN | PB-SN | PB-SN | NI |
| HSP-243 ___-18 | BLACK | YELLOW | RED | NI | PB-SN | PB-SN | NI |
| HSP-243 ___-19 | BLACK | WHITE | RED | L-PB-SN | PB-SN | PB-SN | NI |
| HSP-243 ___-20 | ORANGE | ORANGE | ORANGE | NI | PB-SN | PB-SN | NI |
| HSP-243 ___-21 | BLACK | WHITE | RED | AU | PB-SN | PB-SN | NI |
| HSP-243 ___-22 | BLUE | GREEN | RED | NI | PB-SN | PB-SN | NI |
| HSP-243 ___-23 | WHITE | RED | ORANGE | NI | PB-SN | PB-SN | NI |
| HSP-243 ___-24 | GREEN | BLUE | ORANGE | NI | PB-SN | PB-SN | NI |
| HSP-243 ___-25 | RED | GREEN | BLUE | NI | PB-SN | PB-SN | NI |
| HSP-243 ___-26 | WHITE | BLACK | ORANGE | NI | PB-SN | PB-SN | NI |
| HSP-243 ___-27 | YELLOW | RED | WHITE | AU | PB-SN | PB-SN | NI |
| HSP-243 ___-28 | YELLOW | BLUE | RED | NI | PB-SN | PB-SN | NI |
| HSP-243 ___-29 | RED | GREEN | BLUE | AU | PB-SN | PB-SN | NI |
| HSP-243 ___-30 | WHITE | BLACK | ORANGE | AU | PB-SN | PB-SN | NI |
| HSP-243 ___-31 | ORANGE | RED | WHITE | NI | PB-SN | PB-SN | NI |
| HSP-243 ___-32 | RED | YELLOW | WHITE | NI | PB-SN | PB-SN | NI |
| HSP-243 ___-33 | RED | WHITE | YELLOW | AU | PB-SN | PB-SN | NI |
| HSP-243 ___-34 | GREEN | BLACK | RED | NI | PB-SN | PB-SN | NI |
| HSP-243 ___-35 | YELLOW | WHITE | RED | NI | PB-SN | PB-SN | PB-SN |



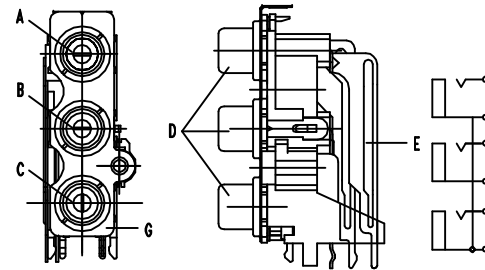
HSP-243V



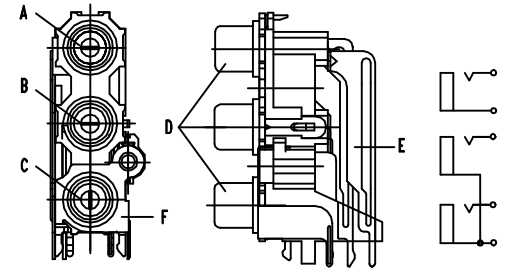
HSP-243V2



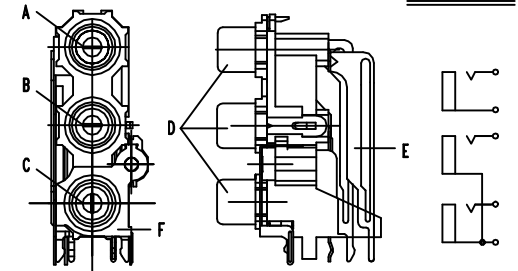
HSP-243VS



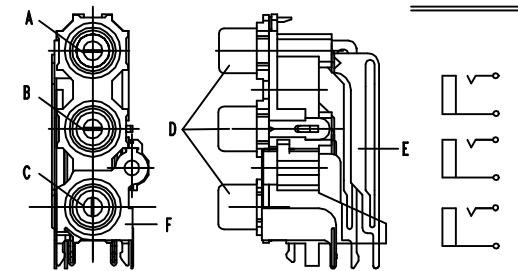
HSP-243VS2



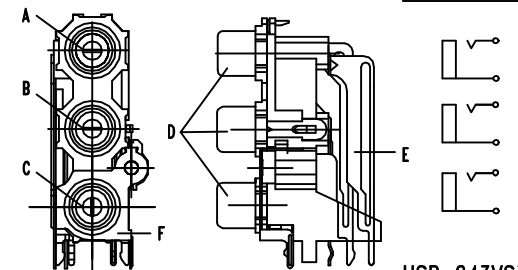
HSP-243V1



HSP-243V3



HSP-243VS1



HSP-243VS3

| | | | | | | | | |
|---|---------|------|------------|------------|---|-----------------|----------------|---------|
| DSND | H.P.LIU | DATE | 1996.03.25 | SCALE | / | NAME | HSP-243 SERIES | |
| DWN | | DATE | | 3RD ANGLE | | PARTS NO. TABLE | | |
| CHKD | | DATE | | PROJECTION | | CAT. NO. | | |
| APVD | | DATE | | UNIT: | | | | |
| SINGATRON ENTERPRISE CO., LTD. (U.S.A.) | | | | | | | DWN.NO. | E-243-1 |

