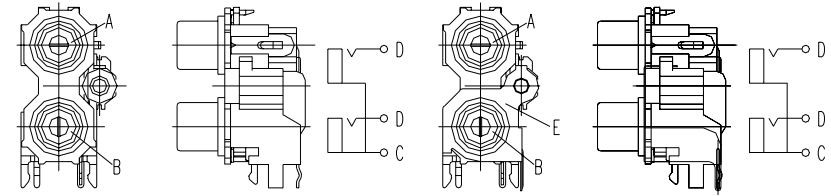




MODEL NO.	COLOR	FINISH				COVER OF COLOR				
		C	D	E	F					
HSP-242 SERIES	A(HOUSING) B									
	WHITE	NI	PB-SN	PB-SN	NI	BLACK				
HSP-242_01	RED									
	BLACK	NI	PB-SN	PB-SN	NI	BLACK				
HSP-242_02	BLACK									
	BLACK	NI	PB-SN	PB-SN	NI	BLACK				
HSP-242_03	WHITE	AU	PB-SN	PB-SN	NI	BLACK				
	RED									
HSP-242_04	BLACK	NI	PB-SN	PB-SN	NI	BLACK				
	RED									
HSP-242_05	RED	NI	PB-SN	PB-SN	NI	BLACK				
	WHITE									
HSP-242_06	RED	AU	PB-SN	PB-SN	NI	BLACK				
	WHITE									
HSP-242_07	RED	AU	AU**	PB-SN	NI	BLACK				
	WHITE									
HSP-242_08	RED	NI	PB-SN	PB-SN	NI	BLACK				
	RED									
HSP-242_09	YELLOW	NI	PB-SN	PB-SN	NI	BLACK				
	YELLOW									
HSP-242_10	WHITE	NI	PB-SN	PB-SN	NI	BLACK				
	WHITE									
HSP-242_11	GREEN	NI	PB-SN	PB-SN	NI	BLACK				
	GREEN									
HSP-242_12	BLACK	AU	PB-SN	PB-SN	NI	BLACK				
	BLACK									
HSP-242_13	RED	NI	PB-SN	PB-SN	NI	BLACK				
	BLACK									
HSP-242_14	WHITE	AU	AU**	PB-SN	NI	BLACK				
	RED									
HSP-242_15	YELLOW	NI	PB-SN	PB-SN	NI	BLACK				
	WHITE									
<b>Plating :</b> PB-SN : MBCu2-PbSn3      NI : MBCu1-Ni1.5      NI+DIP : MBCu1-Ni1.5 L-PB-SN : MBCu2-L-PbSn3      AU : MBNi4-Au0.03      AU** : MBNi2-Au0.05							<b>DWN</b> <i>MAISIE</i> <b>DATE</b> 2001.03.23 <b>UPD</b> <i>JAER</i> <b>DATE</b> 2003.07.25 <b>CHKD</b> <i>CAROL</i> <b>DATE</b> 2003.08.01	<b>NAME:</b> HSP-242 SERIES <b>PARTS NO. TABLE</b>		
<b>SINGATRON U.S.A.</b>							<b>DWN. NO.</b> E-242		1/4	
									B	

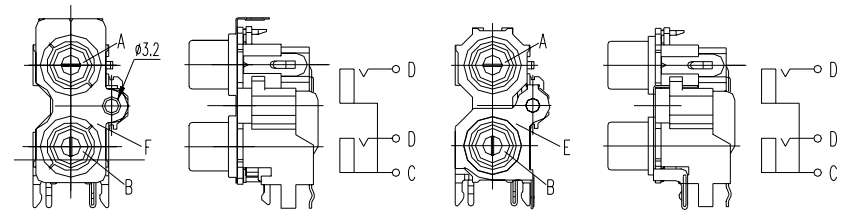
MODEL NO.	COLOR	FINISH				COVER OF COLOR													
		C	D	E	F														
HSP-242 SERIES	A(HOUSING) B																		
HSP-242_-16	YELLOW BLACK	NI	PB-SN	PB-SN	NI	BLACK													
HSP-242_-17	WHITE WHITE	AU	PB-SN	PB-SN	NI	BLACK													
HSP-242_-18	RED WHITE	AU	AU**	AU**	NI	BLACK													
HSP-242_-19	BLACK YELLOW	NI	PB-SN	PB-SN	NI	BLACK													
HSP-242_-20	BLACK BLACK	AU	AU**	PB-SN	NI	BLACK													
HSP-242_-21	WHITE YELLOW	NI	PB-SN	PB-SN	NI	BLACK													
HSP-242_-22	YELLOW YELLOW	AU	PB-SN	PB-SN	NI	BLACK													
HSP-242_-23	ORANGE ORANGE	NI	PB-SN	PB-SN	NI	BLACK													
HSP-242_-24	RED WHITE	L-PB-SN	PB-SN	PB-SN	NI	BLACK													
HSP-242_-25	BLUE RED	NI	PB-SN	PB-SN	NI	BLACK													
HSP-242_-26	RED WHITE	L-PB-SN	PB-SN	PB-SN	NI	BLUE													
HSP-242_-27	WHITE BLACK	NI	PB-SN	PB-SN	NI	BLACK													
HSP-242_-28	BLACK ORANGE	NI	PB-SN	PB-SN	NI	BLACK													
HSP-242_-29	BLACK WHITE	NI	PB-SN	PB-SN	NI	BLACK													
HSP-242_-30	RED WHITE	NI	PB-SN	PB-SN	PB-SN	BLACK													
<b>Plating :</b> PB-SN : MBCu2-PbSn3      NI : MBCu1-Ni1.5      NI+DIP : MBCu1-Ni1.5 L-PB-SN : MBCu2-L-PbSn3      AU : MBNi4-Au0.03      AU** : MBNi2-Au0.05							<b>DWN</b> <i>MAISIE</i> <b>DATE</b> 2001.03.23 <b>UPD</b> <i>JAER</i> <b>DATE</b> 2003.07.25 <b>CHKD</b> <i>CAROL</i> <b>DATE</b> 2003.08.01				<b>NAME:</b> HSP-242 SERIES <b>PARTS NO. TABLE</b>								
<b>SINGATRON U.S.A.</b>							<b>DWN. NO.</b> E-242			2/4									
							B												

MODEL NO.	COLOR	FINISH				COVER OF COLOR
		C	D	E	F	
HSP-242 SERIES	A(HOUSING)	C	D	E	F	BLACK
	B					
HSP-242_-31	RED	AU	PB-SN	PB-SN	PB-SN	BLACK
	WHITE					
HSP-242_-32	ORANGE	NI	PB-SN	PB-SN	NI	BLACK
	YELLOW					
HSP-242_-33	ORANGE	AU	PB-SN	PB-SN	NI	BLACK
	YELLOW					
HSP-242_-34	ORANGE	AU	PB-SN	PB-SN	NI	BLACK
	ORANGE					
HSP-242_-35	WHITE	AU	PB-SN	PB-SN	NI	BLACK
	BLACK					
HSP-242_-36	BLACK	AU	PB-SN	PB-SN	AU**	BLACK
	BLACK					
HSP-242_-37	WHITE	AU	PB-SN	PB-SN	AU**	BLACK
	RED					
HSP-242_-38	WHITE	NI+DIP	PB-SN	PB-SN	NI	BLACK
	RED					
HSP-242_-39	ORANGE	AU	PB-SN	PB-SN	AU**	BLACK
	ORANGE					
HSP-242_-40	WHITE	L-PB-SN	PB-SN	PB-SN	NI	BLACK
	RED					
HSP-242_-41	RED	NI+DIP	PB-SN	PB-SN	NI	BLACK
	WHITE					
HSP-242_-42	ORANGE	NI	PB-SN	PB-SN	NI	BLACK
	BLACK					
HSP-242_-43	GREEN	NI	PB-SN	PB-SN	NI	BLACK
	BLACK					
HSP-242_-44	BLACK	NI+DIP	PB-SN	PB-SN	NI	BLACK
	BLACK					
HSP-242_-45	BLACK	NI	PB-SN	AU**	AU**	BLACK
	BLACK					



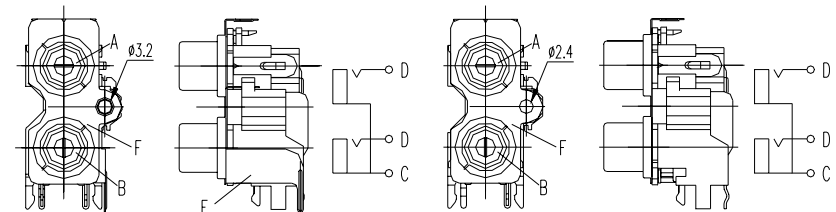
HSP-242V

HSP-242V1



HSP-242V2

HSP-242V3



HSP-242V4

HSP-242V5

DWN	MAISIE	DATE	2001.03.23	NAME: HSP-242 SERIES PARTS NO. TABLE
UPD	JAER	DATE	2003.07.25	
CHKD	CAROL	DATE	2003.08.01	

**Plating :**

PB-SN : MBCu2-PbSn3  
L-PB-SN : MBCu2-L-PbSn3

NI : MBCu1-Ni1.5  
AU : MBNi4-Au0.03

NI+DIP : MBCu1-Ni1.5  
AU\*\* : MBNi2-Au0.05

**SINGATRON U.S.A.**

DWN. NO.  
E-242

3/4

B

