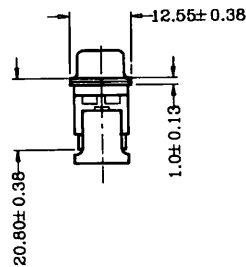
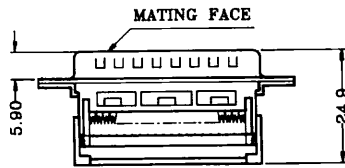
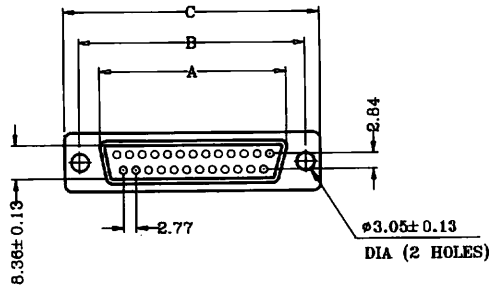
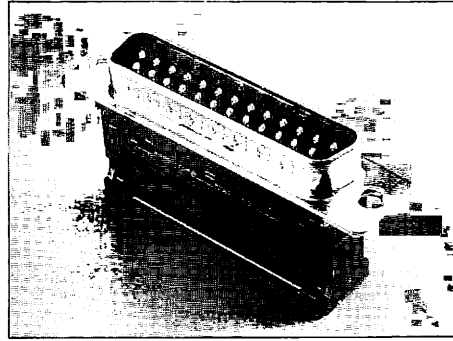


DIDC SERIES

D-SUB CONNECTOR, IDC TYPE

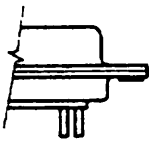


DIMENSIONS

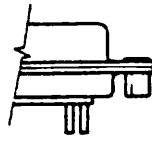
| SHELL SIZE | A .010 0.25 | B .005 0.13 | C .015 0.38 |
|------------|-------------------|-------------------|-------------------|
| 9 (E) | 0.666 16.92 | 0.984 24.99 | 1.213 30.81 |
| 15 (A) | 0.994 25.25 | 1.312 33.32 | 1.541 39.14 |
| 25 (B) | 1.534 38.96 | 1.852 47.04 | 2.088 53.04 |
| 37 (C) | 2.182 55.42 | 2.500 63.50 | 2.729 69.32 |
| 50 (D) | 2.079 52.81 | 2.406 61.11 | 2.635 66.93 |

• MOUNTING OPTIONS:
SEE PAGE 46

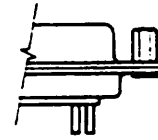
MOUNTING OPTION



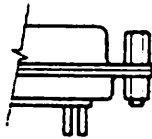
OPTION X
 .120 DIAMETER HOLES



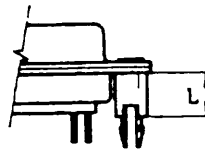
OPTION K
 WITH #4-40 THREADED
 RIVETED CLINCH NUTS



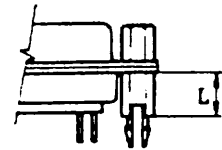
OPTION J
 WITH #4-40
 THREADED FIXED
 JACK SCREWS



OPTION KJ
 WITH #4-40 THREADED
 RIVETED CLINCH NUTS
 AND JACK SCREWS
 ASSEMBLED TO
 CONNECTOR



OPTION BR
 WITH #4-40 THREADED
 RIVETED BRACKETS



OPTION BRJ
 WITH #4-40 THREADED
 RIVETED BRACKET
 AND JACK SCREWS
 ASSEMBLED TO
 CONNECTOR

| SERIES | MOUNTING OPTIONS |
|--------|---|
| DDF | X, K, J, KJ, BR, BRJ (L = 8.50MM) |
| DDL | X, K, J, KJ, BR, BRJ (L = 14.50MM) |
| DSF | X, K, J, KJ |
| DCC | X, K, J, KJ |
| DS | X, K, J, KJ |
| DSH | X, K, J, KJ |
| DD | X, K, J, KJ, BR, BRJ (L = 6.00MM) |
| DDH | X, K, J, KJ, BR, BRJ (L = 6.00MM) |
| DDL | X, K, J, KJ, BR, BRJ (L = 11.00MM, 12.70MM) |
| DDLH | X, K, J, KJ, BR, BRJ (L = 9.65MM, 11.00MM, 12.70MM) |
| DC | X, K, J, KJ |
| DCH | X, K, J, KJ |
| DIDC | X, K, J, KJ |
| DMR | X, K, J, KJ |
| DMRM | X, K, J, KJ |
| DMRL | X, K, J, KJ |

HOW TO ORDER

$\frac{DR}{1} - \frac{A}{2} \frac{15}{3} \frac{S}{4} - \frac{NJ}{5} - \frac{0}{6} \frac{0}{7} \frac{0}{8} - \frac{C}{9}$

$\frac{DP}{1} - \frac{E}{2} \frac{9}{3} \frac{S}{4} / \frac{E}{2} \frac{15}{3} \frac{S}{4} - \frac{ANJ}{5} - \frac{0}{6} \frac{0}{7} \frac{0}{8} - \frac{C}{9}$ (DUAL PORT ONLY)

TOP CONNECTOR BOTTOM CONNECTOR

1. SERIES

2. SHELL SIZE

| | |
|----------------|----------------|
| E - - - - - 9 | B - - - - - 25 |
| A - - - - - 15 | C - - - - - 37 |
| G - - - - - 19 | D - - - - - 50 |
| F - - - - - 23 | |

3. NO. OF CONTACTS

9, 15, 19, 23, 25, 26, 37, 44, 50, 62, 78, 104

4. CONTACT TYPE

P : PIN CONTACT (PLUG), BRASS
S : SOCKET CONTACT (RECEPTACLE), PHOSPHOR BRONZE
SB : SOCKET CONTACT (RECEPTACLE), BRASS

5. MOUNTING OPTIONS

6. CONTACT FINISH

| | |
|-------------------------|---------------|
| 0: GOLD FLASH | 4: 15 μ'' |
| 1: SELECTIVE GOLD FLASH | 5: 20 μ'' |
| 2: 5 μ'' | 6: 30 μ'' |
| 3: 10 μ'' | |

7. INSULATOR COLOR

| | |
|----------|---------|
| 0: BLACK | 2: BLUE |
| 1: WHITE | 3: GREY |

8. SHELL PLATED

| | |
|-----------|----------------|
| 0: TIN | 2: ZINC |
| 1: NICKEL | 3: ALL PLASTIC |

9. CUSTOMER'S DESIGN

FEATURES

- MEETS EIA, RS232C AND RS449 STANDARDS FOR DATA COMMUNICATION INPUT/OUTPUT CONNECTORS
- BRIGHT TIN SHELLS FOR EXCEPTIONAL CONDUCTIVITY AND GROUNDING
- INDENTATIONS (DIMPLES) FOR EXCEPTIONAL GROUNDING AND MATING RETENTION
- D SHAPE CONNECTOR MATING AND POLARIZATION
- SEVEN (7) SHELL SIZES
- FIVE (5) TYPES OF CONTACT TERMINATION, SOLDER CUP, SOLDER DIP, CRIMP, IDC AND RIGHT ANGLE
- TWO (2) TYPES OF CONTACT CONSTRUCTION, PRECISION MACHINED OR PRECISION FORMED
- ACCESSORIES ARE AVAILABLE

PERFORMANCE SPECIFICATIONS

MATERIALS AND FINISH

SHELL

STEEL MATERIAL, TIN FINISH AND IDENTIFICATIONS (DIMPLES) ON PLUG ONLY

INSERT

PBT THERMO PLASTIC, BLACK COLOR, 30% GLASS FILLED SELF EXTINGUISHING, 94V-0 RATED

CONTACT MATERIAL

PIN : BRASS
SOCKET: PHOSPHOR BRONZE OR BRASS

MECHANICAL CHARACTERISTICS

CONTACT RETENTION

PRECISION MACHINED CONTACT 10 LBS
PRECISION FORMED CONTACT 10 LBS

CONTACT SEPARATION FORCE

4 OUNCES MIN

ELECTRICAL CHARACTERISTICS

CONTACT CURRENT RATING

PRECISION MACHINED CONTACT 7.6 AMPS (WITH 20 AWG WIRE)
PRECISION FORMED CONTACT 5.0 AMPS (WITH 20 AWG WIRE)

CONTACT RESISTANCE

PRECISION MACHINED CONTACT
5 MILLIOHMS MAX
PRECISION FORMED CONTACT
8 MILLIOHMS MAX

MILITARY AND FEDERAL SPECIFICATIONS

| | |
|-----------|-----------------|
| ASTM-B633 | ZINC PLATING |
| QQ-B750 | PHOSPHOR BRONZE |
| QQ-N-290 | NICKEL PLATING |
| QQ-S-698 | STEEL |

CONTACT FINISH

GOLD FLASH OVER 100 MICRO INCH
NICKEL ON ENTIRE CONTACT AREA.

GROUNDING BRACKET

BRASS MATERIAL, TIN FINISH

RIVETED INSERT

BRASS MATERIAL, NICKEL FINISH

JACK SCREW

BRASS MATERIAL,

CONTACT ENGAGEMENT FORCE

9 OUNCES MAX

DIELECTRIC WITHSTANDING VOLTAGE

1000 VAC MIN

INSULATION RESISTANCE

5000 MEGOHMS MIN

TEMPERATURE RATING

- 55 ~ + 125 °C

| | |
|-------------|--------------|
| MIL-C-50 | BRASS |
| MIL-C-576 | COPPER |
| MIL-G-45204 | GOLD PLATING |
| MIL-T-10727 | TIN PLATING |