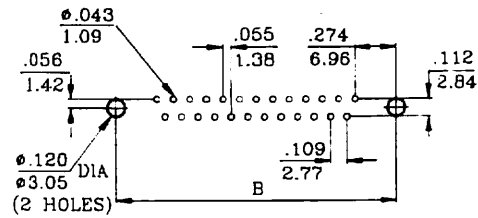
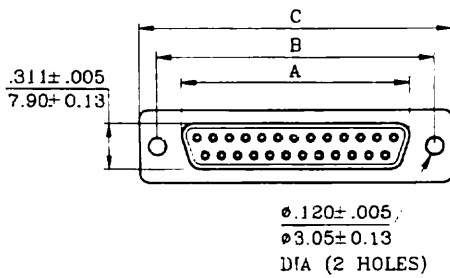
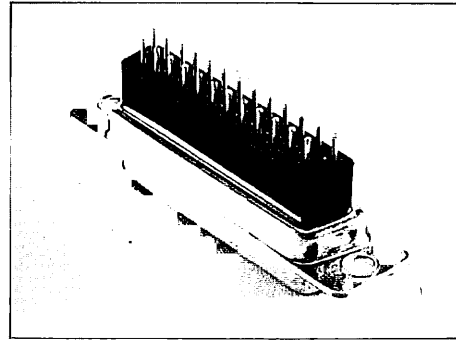
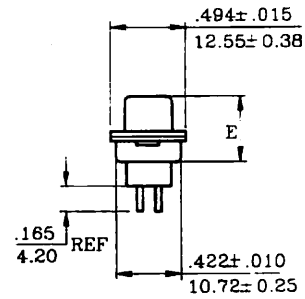
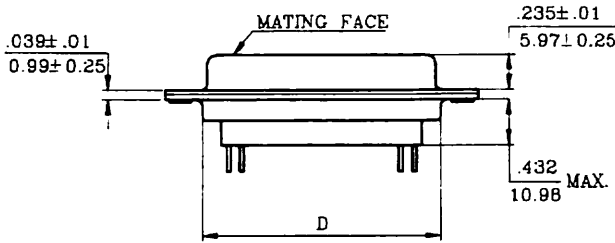


# DDL SERIES

## D-SUB CONNECTOR, STRAIGHT PCB TYPE, HIGH PROFILE



PCB HOLE PATTERNS

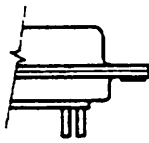


### DIMENSIONS

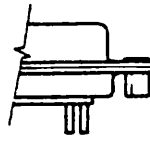
| SHELL SIZE | A              | B              | C              | D              | E              |
|------------|----------------|----------------|----------------|----------------|----------------|
|            | 0.010<br>0.25  | 0.005<br>0.13  | 0.015<br>0.38  | 0.010<br>0.25  | 0.015<br>0.38  |
| 9<br>(E)   | 0.643<br>16.33 | 0.984<br>24.99 | 1.213<br>30.81 | 0.759<br>19.28 | 0.429<br>10.90 |
| 15<br>(A)  | 0.971<br>24.66 | 1.312<br>33.32 | 1.541<br>39.14 | 1.083<br>27.51 | 0.429<br>10.90 |
| 25<br>(B)  | 1.511<br>38.38 | 1.852<br>47.04 | 2.088<br>53.04 | 1.625<br>41.28 | 0.429<br>10.90 |
| 37<br>(C)  | 2.159<br>54.84 | 2.500<br>63.50 | 2.729<br>69.32 | 2.272<br>57.71 | 0.429<br>10.90 |

• MOUNTING OPTIONS:  
SEE PAGE 46

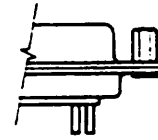
# MOUNTING OPTION



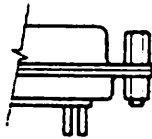
**OPTION X**  
 .120 DIAMETER HOLES



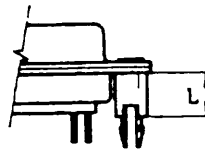
**OPTION K**  
 WITH #4-40 THREADED  
 RIVETED CLINCH NUTS



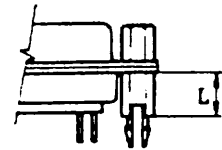
**OPTION J**  
 WITH #4-40  
 THREADED FIXED  
 JACK SCREWS



**OPTION KJ**  
 WITH #4-40 THREADED  
 RIVETED CLINCH NUTS  
 AND JACK SCREWS  
 ASSEMBLED TO  
 CONNECTOR



**OPTION BR**  
 WITH #4-40 THREADED  
 RIVETED BRACKETS



**OPTION BRJ**  
 WITH #4-40 THREADED  
 RIVETED BRACKET  
 AND JACK SCREWS  
 ASSEMBLED TO  
 CONNECTOR

| SERIES | MOUNTING OPTIONS                                    |
|--------|---|
| DDF    | X, K, J, KJ, BR, BRJ (L = 8.50MM)                   |
| DDL    | X, K, J, KJ, BR, BRJ (L = 14.50MM)                  |
| DSF    | X, K, J, KJ   |
| DCC    | X, K, J, KJ   |
| DS     | X, K, J, KJ   |
| DSH    | X, K, J, KJ   |
| DD     | X, K, J, KJ, BR, BRJ (L = 6.00MM)                   |
| DDH    | X, K, J, KJ, BR, BRJ (L = 6.00MM)                   |
| DDL    | X, K, J, KJ, BR, BRJ (L = 11.00MM, 12.70MM)         |
| DDLH   | X, K, J, KJ, BR, BRJ (L = 9.65MM, 11.00MM, 12.70MM) |
| DC     | X, K, J, KJ   |
| DCH    | X, K, J, KJ   |
| DIDC   | X, K, J, KJ   |
| DMR    | X, K, J, KJ   |
| DMRM   | X, K, J, KJ   |
| DMRL   | X, K, J, KJ   |

# HOW TO ORDER

$\frac{DR}{1} - \frac{A}{2} \frac{15}{3} \frac{S}{4} - \frac{NJ}{5} - \frac{0}{6} \frac{0}{7} \frac{0}{8} - \frac{C}{9}$

$\frac{DP}{1} - \frac{E}{2} \frac{9}{3} \frac{S}{4} / \frac{E}{2} \frac{15}{3} \frac{S}{4} - \frac{ANJ}{5} - \frac{0}{6} \frac{0}{7} \frac{0}{8} - \frac{C}{9}$  (DUAL PORT ONLY)

TOP  
CONNECTOR

BOTTOM  
CONNECTOR

## 1. SERIES

## 2. SHELL SIZE

|                |                |
|----------------|----------------|
| E - - - - - 9  | B - - - - - 25 |
| A - - - - - 15 | C - - - - - 37 |
| G - - - - - 19 | D - - - - - 50 |
| F - - - - - 23 |                |

## 3. NO. OF CONTACTS

9, 15, 19, 23, 25, 26, 37, 44, 50, 62, 78, 104

## 4. CONTACT TYPE

P : PIN CONTACT (PLUG), BRASS  
S : SOCKET CONTACT (RECEPTACLE), PHOSPHOR BRONZE  
SB : SOCKET CONTACT (RECEPTACLE), BRASS

## 5. MOUNTING OPTIONS

## 6. CONTACT FINISH

|                         |               |
|-------------------------|---------------|
| 0: GOLD FLASH           | 4: 15 $\mu''$ |
| 1: SELECTIVE GOLD FLASH | 5: 20 $\mu''$ |
| 2: 5 $\mu''$            | 6: 30 $\mu''$ |
| 3: 10 $\mu''$           |               |

## 7. INSULATOR COLOR

|          |         |
|----------|---------|
| 0: BLACK | 2: BLUE |
| 1: WHITE | 3: GREY |

## 8. SHELL PLATED

|           |                |
|-----------|----------------|
| 0: TIN    | 2: ZINC        |
| 1: NICKEL | 3: ALL PLASTIC |

## 9. CUSTOMER'S DESIGN

---

## FEATURES

- MEETS EIA, RS232C AND RS449 STANDARDS FOR DATA COMMUNICATION INPUT/OUTPUT CONNECTORS
- BRIGHT TIN SHELLS FOR EXCEPTIONAL CONDUCTIVITY AND GROUNDING
- INDENTATIONS (DIMPLES) FOR EXCEPTIONAL GROUNDING AND MATING RETENTION
- D SHAPE CONNECTOR MATING AND POLARIZATION
- SEVEN (7) SHELL SIZES
- FIVE (5) TYPES OF CONTACT TERMINATION, SOLDER CUP, SOLDER DIP, CRIMP, IDC AND RIGHT ANGLE
- TWO (2) TYPES OF CONTACT CONSTRUCTION, PRECISION MACHINED OR PRECISION FORMED
- ACCESSORIES ARE AVAILABLE

## PERFORMANCE SPECIFICATIONS

### MATERIALS AND FINISH

#### SHELL

STEEL MATERIAL, TIN FINISH AND IDENTIFICATIONS (DIMPLES) ON PLUG ONLY

#### INSERT

PBT THERMO PLASTIC, BLACK COLOR, 30% GLASS FILLED SELF EXTINGUISHING, 94V-0 RATED

#### CONTACT MATERIAL

PIN : BRASS  
SOCKET: PHOSPHOR BRONZE OR BRASS

### MECHANICAL CHARACTERISTICS

#### CONTACT RETENTION

PRECISION MACHINED CONTACT 10 LBS  
PRECISION FORMED CONTACT 10 LBS

#### CONTACT SEPARATION FORCE

4 OUNCES MIN

### ELECTRICAL CHARACTERISTICS

#### CONTACT CURRENT RATING

PRECISION MACHINED CONTACT 7.6 AMPS (WITH 20 AWG WIRE)  
PRECISION FORMED CONTACT 5.0 AMPS (WITH 20 AWG WIRE)

#### CONTACT RESISTANCE

PRECISION MACHINED CONTACT  
5 MILLIOHMS MAX  
PRECISION FORMED CONTACT  
8 MILLIOHMS MAX

### MILITARY AND FEDERAL SPECIFICATIONS

|           |                 |
|-----------|-----------------|
| ASTM-B633 | ZINC PLATING    |
| QQ-B750   | PHOSPHOR BRONZE |
| QQ-N-290  | NICKEL PLATING  |
| QQ-S-698  | STEEL           |

#### CONTACT FINISH

GOLD FLASH OVER 100 MICRO INCH  
NICKEL ON ENTIRE CONTACT AREA.

#### GROUNDING BRACKET

BRASS MATERIAL, TIN FINISH

#### RIVETED INSERT

BRASS MATERIAL, NICKEL FINISH

#### JACK SCREW

BRASS MATERIAL,

#### CONTACT ENGAGEMENT FORCE

9 OUNCES MAX

#### DIELECTRIC WITHSTANDING VOLTAGE

1000 VAC MIN

#### INSULATION RESISTANCE

5000 MEGOHMS MIN

#### TEMPERATURE RATING

- 55 ~ + 125°C

|             |              |
|-------------|--------------|
| MIL-C-50    | BRASS        |
| MIL-C-576   | COPPER       |
| MIL-G-45204 | GOLD PLATING |
| MIL-T-10727 | TIN PLATING  |