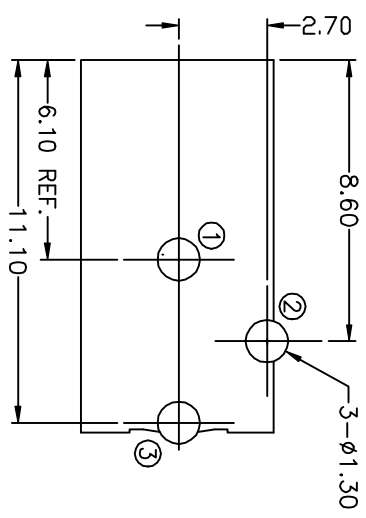
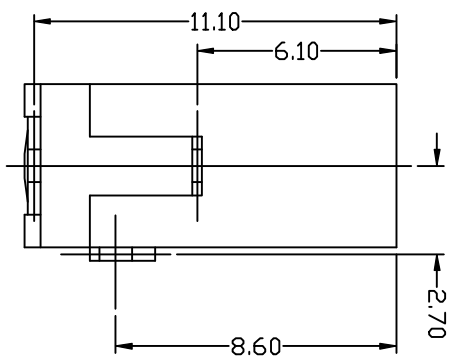


PIN DIA.	PART NO.
1.0mm	AJ218A
1.3mm	AJ218B
1.3mm	AJ218B



Recommended PCB Layout  
[BOTTOM VIEW]

UNLESS OTHERWISE SPECIFIED,  
DIMENSIONS TOLERANCE ON DECIMALS ±0.3

REV.	DESCRIPTIONS	DATE
1		

ITEM	PART NO.	NAME	MATERIAL	FINISH	QTY	NOTE
6	AJ218-M4	CENTER PIN	COPPER	NICKEL	1	1.006/1.30
5	AJ218-M3	PIN CONTACT	BRASS	SILVER	1	40T
4	AJ218-M2	SHUNT TERMINAL	BRASS	SILVER	1	40T
3	AJ218-M1	SPRING CONTACT	PRS	SILVER	1	25T
2	AJ218-P2	HOUSING	PAG6		1	UL94V-0
1	AJ218-P1	HOUSING	PAG6		1	UL94V-0

APPROVALS:	DATE:	TITLE:
DESIGNED BY: GREGG SERRANOVA		DC POWER JACK, A TYPE
CHECKED BY: RICHARD D. SERRANOVA		CLASS 2
DATE:		
SCALE:		

AJ218

AJ218X