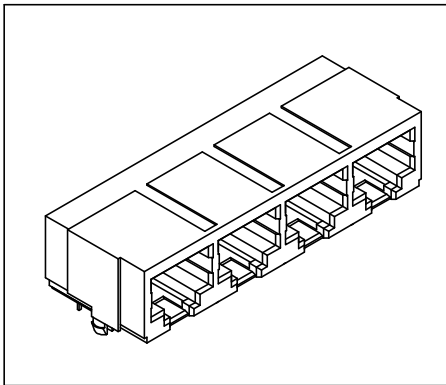


# Side Entry Modular Telephone Jack

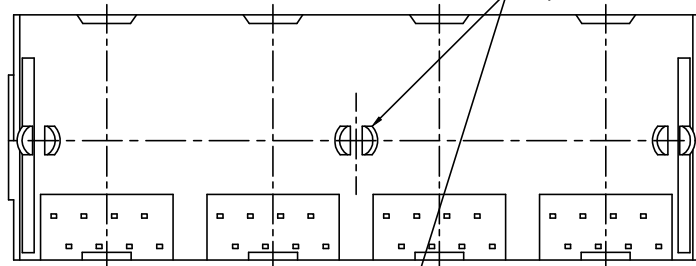
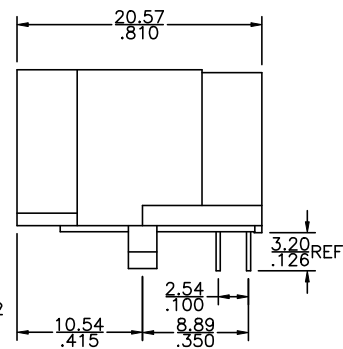
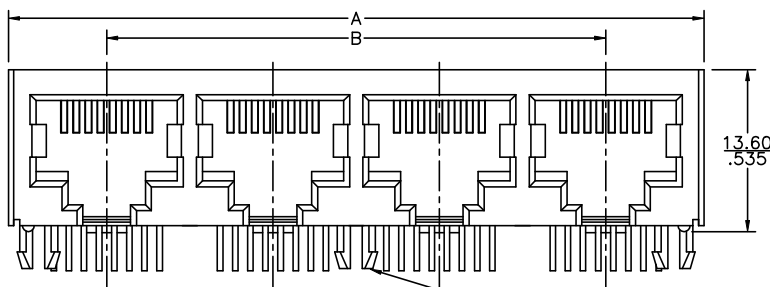
(Low Profile, Multiple Ports)

3012 Series

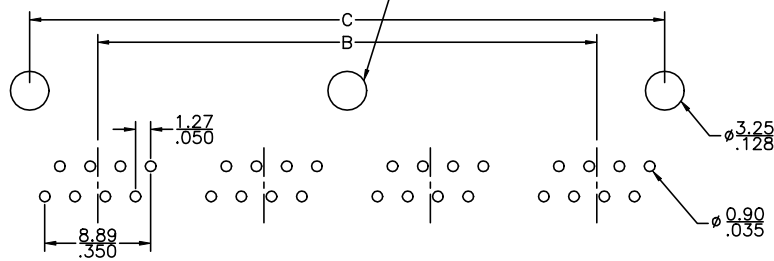


## Material and Finish:

- \* Housing: Standard Material: Glass Filled Polyester UL94V-0.  
Standard Color: Black.
- \* Contact: 0.35mm(0.014") Thickness Phosphor Bronze.  
Gold Plating over Nickel.
- \* Cavity conforms to FCC rules and regulations part 68,  
subpart F.



P.C.B. Hole Layout



Only 3012-08, 3012-10, 3012-12

No. of Ports	A	B	C
2	30.48 1.200	13.97 .550	25.40 1.000
4	58.42 2.300	41.91 1.650	53.34 2.100
5	72.39 2.850	55.88 2.200	67.31 2.650
6	86.36 3.400	69.85 2.750	81.28 3.200
8	114.30 4.500	97.79 3.850	109.22 4.300
10	142.24 5.600	125.73 4.950	137.16 5.400
12	170.18 6.700	153.67 6.050	165.10 6.500

## Ordering Information

Series No.	No. of Position	No. of Contact	No. of Ports	Contact Plating
3012	8	8	02	1
	8	2	02	6 μ" 1
		4	04	15 μ" 2
		6	05	30 μ" 3
		8	12	50 μ" 4